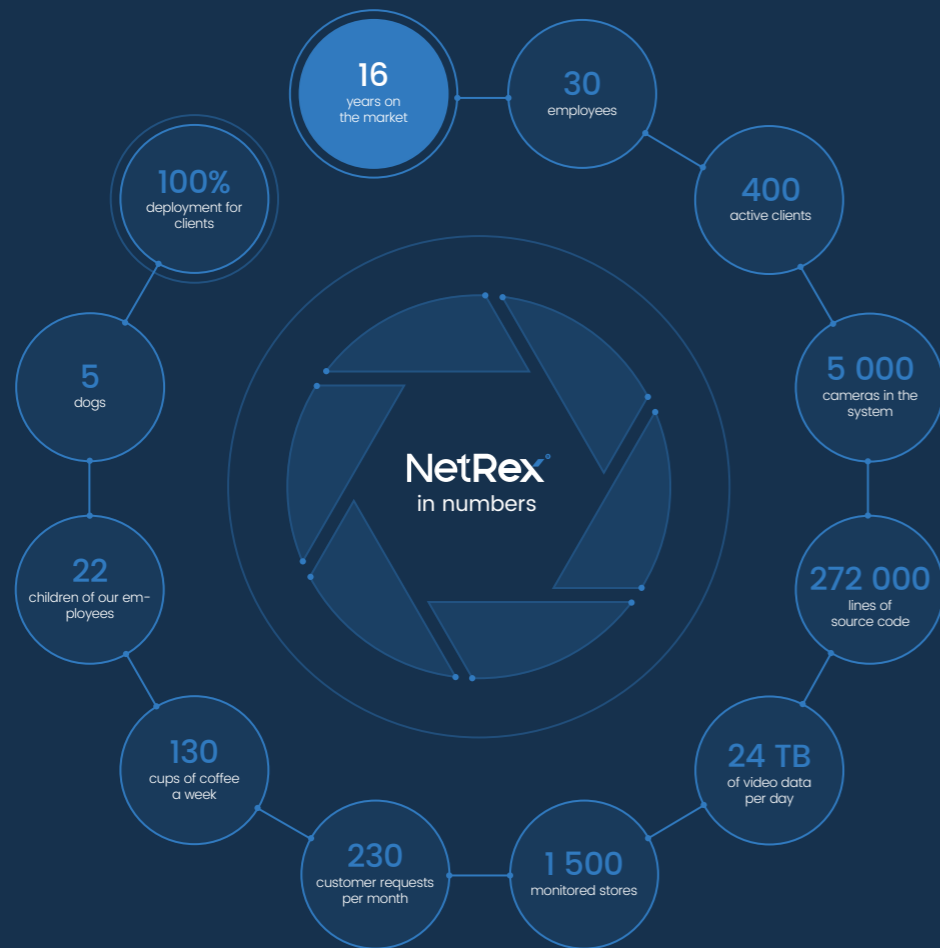




Who is NetRex?

We are a leading **IT company** offering **hosted video** services for **professional installations**. Since 2006, we have been continually exploring and discovering ways to **deploy modern network video technologies** with the ubiquitous internet. We strive to bring new ways to provide security, better control, and increase work efficiency.

We are a Czech company with a **presence and many installations in most European countries**. We have a **strong development team** and our close cooperation with the leading **IP camera** manufacturer, Swedish company **Axis Communications AB**, allows us to provide operational solutions to fulfill even the most demanding customer requirements. We believe that our services under the banner **"NetRex – Your Third Eye"** will appeal to you as well.



NetRex Retail Analytics

Analytical panel for easy data comparison (store attendance, transaction data, or conversion rates).

Just do it smart!

Certification & Membership:



What the analytics panel offers?

01 Everything in one place

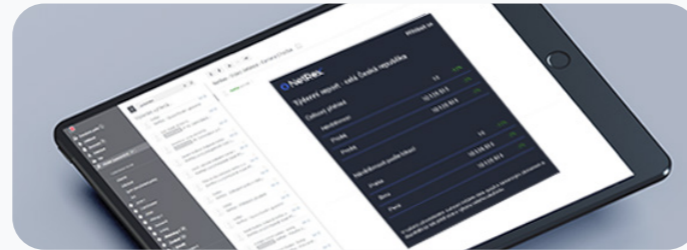
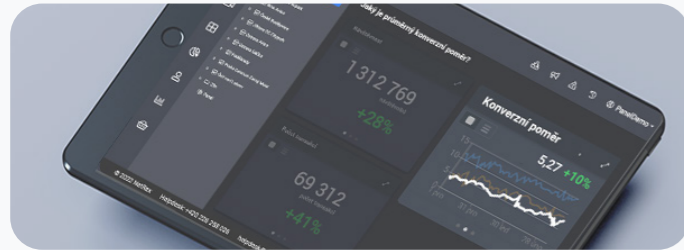
- All important data is displayed clearly on the analytics panel.
- Don't waste time searching for and copying data into tables. Simply open our analytics panel.

02 Data comparison

- A suite of services composed of individual modules. A comparison of various data sources (store traffic, checkout data or conversion rates) is displayed on the analytics panel.
- You can set up several analytics panels and obtain a view of your entire network of stores or simply one specific area for your regional manager.

03 Automatic reports

- Easily set up which reports you wish to receive and how often.
- The latest figures will drop straight into your inbox and you'll keep a constant overview of progress.

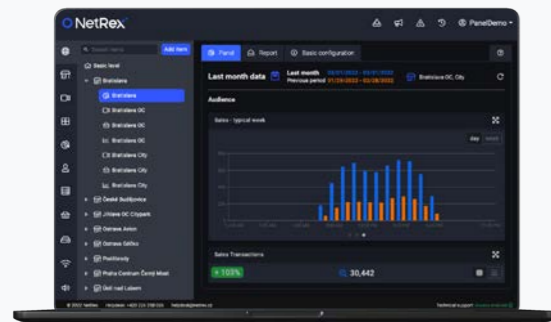


Individual modules of NetRex Retail Analytics

Data from various sources can be gathered in the analytics panel with the help of individual modules. You can choose modules according to your needs. Here is an overview of the modules currently available.

01 Counter modul

A module that provides the number of visitors to a store with high accuracy. This data can be inputted into the analytics panel to provide a comparison between stores. Counter also sends automatic reports via email.



02 CashDesk modul

Linking your camera system with your checkout system gives you control of critical cash operations and an overview of business metrics. Thanks to the data provided you can measure one of the most important retail metrics - conversion rate.



Integration with checkout systems

- Connecting the surveillance of NetRex Monitor and services of Netrex Retail Analytics results in the ideal combination of the interconnection between the camera world and data of individual stores.



NetRex development team

- NetRex is developing further analytics solutions with the help of our in-house development team and through collaboration with leading universities. In the near future, you can look forward to additional data sources and further modules for NetRex Retail Analytics.

How NetRex solution works?

We pride ourselves on **quality hardware** and services that are practical and have **simple, user-friendly controls**.



High quality cameras

Choose top IP cameras from the leading Swedish manufacturer Axis Communications. We have been using them for all our solutions for more than 16 years and they are very reliable.



Cloud platform

You can easily connect the cameras and any other network elements to a cloud-based platform that offers complete remote management and many other features.



Wide range of services

A range of practical services are available on the platform: surveillance with recording, retail analytics, time-lapse video, streaming, reading vehicle registration plates and more.

What we provide for you:

The solution proposal

We will build a solution that **suits your needs** using the catalog of our services.

Installation and training

Our team will **install** everything for you and **explain** in detail how the system **works** and how to **operate it**.

Support

Our **helpdesk** will help you at any time. In most cases, we can solve the problem remotely without a technician having to come out.



Would you like to know more?

Do not hesitate to contact us.
+420 226 258 021 | info@netrex.cz

Modul Counter NetRex Retail Analytics



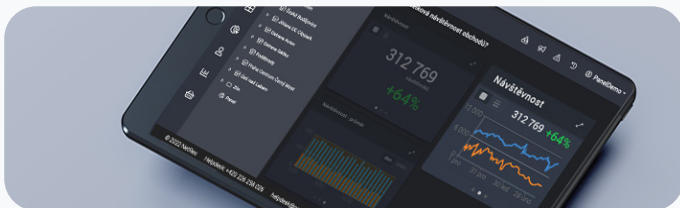
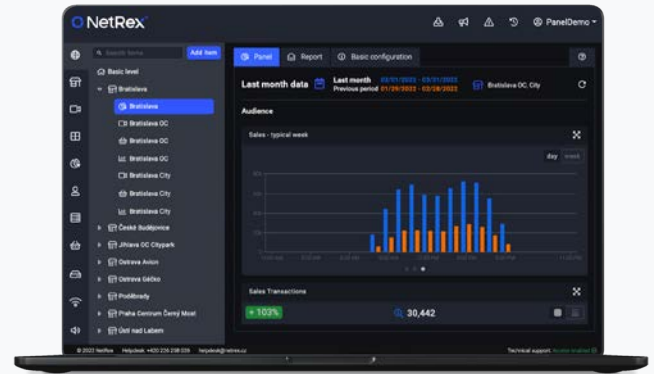
Why choose the Counter module and what data it provides?

01 Learn how many people visit your store and when (STORE TRAFFIC)

- High accuracy (95-99%).
- Effective shift planning using real data, not guesswork.
- Set up automated reports direct to your inbox.

02 Work with data in the analytics panels

- Comparison of the number of visitors to different stores.
- Select and view different time periods.
- Ideally used in combination with checkout data – CashDesk module



NetRex development team

- NetRex is developing further analytics solutions with the help of our in-house development team and through collaboration with leading universities. In the near future, you can look forward to additional data sources and further modules for NetRex Retail Analytics.



NetRex Counter	Parametry
Pricing	24,90 € without VAT / month
Bulk discounts	Please contact our sales department.
Measuring accuracy	95–99 %
Recognizing concurrent passersby	Yes
Protect the privacy of passersby	Yes (throughout the duration of service)
Website access	Yes
Mobile access	Yes
Automatic data report	Yes
Online connection with MS Excel	Yes
Data export	Yes
Central data storage	For the period of the service usage
Resistance of counting against Internet outages	Yes
Continuous surveillance of system functionality 24/7	Yes
Logging of events	Yes
Secure SSL access	Yes
Event module	Yes
Notification of events by e-mail	Yes
Subordinate user accounts	Yes
Access to system features through the application interface	Yes
Customer support	E-mail and telephone (working days 9:00–18:00)
Option to purchase enhanced support (SLA)	Yes

Modul CashDesk NetRex Retail Analytics



Why choose the CashDesk module and what data it offers?

01 Verify important checkout transactions (CONNECTION WITH CHECKOUT SYSTEM)

- Connect camera and checkout systems.
- Reduce losses thanks to an overview of suspicious transactions (sales, returns, discounts).
- Business metrics – average order value, sales.

02 Find out how many visitors actually made a purchase (CONVERSION RATE)

- An overview of your conversion rate and data to improve sales efficiency.
- Analytics panel for comparison of data from several sites.
- Motivate managers and staff with regular reviews (it is proven that this leads to better sales outcomes).



Counter and CashDesk modules



- Using these two modules together gives you a great tool for calculating your conversion rate - the most important retail metric.



NetRex CashDesk	Parameters
Pricing	15,90 € without VAT / month
Bulk discounts	Please contact our sales department.
Number of cash registers	1
Number of cameras linked to checkout system	1
Display recording filters	Yes
Number of filters	Up to 10
How to display data in the analytics panel	Yes
How to set time for data storage	Yes
Maximum time of storage of checkout data	2 years
Mobile access	Yes
Web access	Yes
Export data	Yes
Automated data reporting	Yes
Access to system functions through the application interface	Yes
Continuous monitoring of system functionality 24/7	Yes
Secure SSL access	Yes
Sub-user accounts	Yes
Customer support	E-mail and telephone (working days 9:00–18:00)
Option to purchase enhanced support (SLA)	Yes

Current service parameters are available at www.netrex.cz.